

CYCLING HOLIDAYS CRUISES & TOURS



PRICE GUARANTEE & PERSONALISED SERVICE



WELCOME TO *Cycling Holidays*



TABLE OF CONTENTS

[About Tweet World Travel](#) 2

[Why book with Tweet World Travel](#) 3

[Sri Lanka](#) 4

[Mongolia](#) 6

[Japan](#) 8

[Bhutan](#) 10

[Vietnam](#) 12

MULTI-COUNTRY

[China/Tibet](#) 14

[Vietnam and Laos](#) 16

[Vietnam and Cambodia](#) 18

[Thailand and Malaysia](#) 20

[TERMS & CONDITIONS](#) 22



Tweet World Travel was founded in 2012, by Thuy Carroll (Managing Director) and is a wholly owned Australian company. Over the years, Tweet World Travel has built a reputation and is now one of the leading travel agencies in Australia and offer a Travel Tech Platform and wholesale travel services for Worldwide River Cruises and Asia Tours. Our head office is located in Adelaide, South Australia, with representative offices in Queensland and Asia, to carry out our local operations

We are one of Australia's leading Tour Operators and specialise in tailor-made holidays in Asia, including School Tours and Luxury & Lifestyle Holidays. We offer a wide range of unique and memorable luxury experiences such as Corporate Lux, Luxury Holidays, Golf Tours, Family packages, Romance/honeymoon packages, Spa & Wellness retreats, and Yoga & Wellness Tours.

One of the services we are best known for is our First-class Luxury Tours. Our small groups depart frequently, with only 2-16 passengers, have a set departure date and a set price. All our tours are guided by local experts in each destination to provide a truly memorable and authentic experience.

We pride ourselves on providing the best travel options for excellent services and amazing travel products to our esteemed customers, travel agents, and business partners. We are committed to delivering value to our customers and this value takes into cognizance of affordability, personalization, flexibility, and attention to even the minutest detail.

We will go to great lengths to ensure that clients get access to the best travel options. As part of our drive for excellence, our team is made up of professional travel experts who have received the best training in the industry and have garnered several years of experience in the field. These travel experts are passionate about their job and are always on hand to assist you in planning your next holiday.

OUR DEDICATED TEAM



ABOUT US



OUR COMMITMENT

To serve our clients with the best value, attention to detail, flexibility, price guarantee and personalised services.



WHY US



Unique & Exclusive
Destination



Professional
knowledge



24/7 support
line



No hidden extra
costs



4 & 5 Star
accommodation



Agent B2B
Booking Portal



Commitment to
excellent service



Specialist in
Worldwide River
Cruises and Tours



Tailor Made
Holidays



Price
guaranteed



Chartering Global
Cruise Ships



Australian
wholesaler



Total riding distance: 575 km
Average climbing per day: 687m
Average ride per day: 64km



SRI LANKA

CYCLING TOUR

Trip code : TWT_LKA-SST | Duration : 13 days

Enjoy South Asia's best cycling experience and explore the world of spice and splendour on bike. Discover Sri Lanka's landscape combining a great mix of challenging terrain and spectacular scenery. Tackle the hill country-side, cycle through lush highlands, rainforests to the coast to explore a collection of ancient and natural delights that will bedazzle visitors. Spot wildlife in their natural habitat as you peddle through national parks. Along the way, satisfy your tastebuds with delicious cuisine and be charmed by the amazing hospitality and friendliness of the Sri Lankan people.

This is a suggested itinerary only, and can be changed to suit each individual group. Tweet World Travel specialises in professionally designing and customising biking tours, ensuring your holiday is tailored to suit your every need.

Your Inclusions:

-  24/7 local assistance and travel guidance
-  Expert services of experienced cyclist local guides throughout your trip
-  All touring & transfers in air-conditioned vehicles
-  Support vehicle throughout the tour
-  Accommodation at 4-star hotel/ resort with daily breakfast, Lunch and Dinner
-  Comprehensive sightseeing, Entrance fees and local government taxes
-  Light weight 24 to 27-speed gearing, mountain bikes & Biking equipment
-  12 breakfasts, 10 lunches, 11 dinners; Water and snack during the tour





Brief Itinerary

DAY 1 COLOMBO ARRIVAL (D)

Arrive in Sri Lanka. You will be transferred from the airport to your hotel in Negombo. In the afternoon, we will have a trip briefing and welcome dinner.

DAY 2 NEGOMBO - DAMBULLA (B,L,D)

Today we will ride 50KM long from the hotel along the old coast road. After 50 km, we rack up the bikes and transfer 3 hours to Dambulla, breaking for lunch at Kununegala Lake. Check-in your hotel and enjoy the night in Dambulla.

DAY 3 DAMBULLA LOOP (B,L,D)

Today we will ride 60KM. We ride through the countryside on a mix of tarmac and red dirt roads, passing orchards, paddy fields, and elephant grass. We park the bikes and walk through the old water gardens before climbing 300m to the view the ruins of King Kasyapa's summer palace on the summit. Our afternoon ride follows an old irrigation canal, and we cycle on red dirt roads, framed by long green grass, and see lots of people bathing as we head back to our hotel in Dambulla.

DAY 4 DAMBULLA - POLONNARUWA (B,L,D)

Today we will ride 78KM on a good road surface. Have a rest along the way and do some sightseeing before lunch at a local hotel. We then ride through the historic park of Polonnaruwa, the 10th century capital and best preserved of the ancient cities. After seeing the main sites, we have a 20-minute transfer to our hotel on the banks of the reservoir.

DAY 5 POLONNARUWA - KANDY (B,L,D)

Today we will ride 75KM include ride around huge lake known as the Sea of Parakrama, through Angammedilla National Park. We end the ride here to avoid busy roads and transfer to lunch in Matale and on to Kandy, the spiritual and cultural capital of the hill country and Sri Lanka's second largest city.

DAY 6 KANDY REST DAY (B,L,D)

Today, enjoy your free day to explore the town centre's old shops, antique and gem specialists, or the bustling market.

DAY 7 KANDY - HATTON (B,L,D)

Today we will take a 78km ride. For those who enjoy riding but find hills a bit too challenging, there is the option of taking the train for the final part into Hatton. Those taking the train will be met at the station and shuttled to the bungalow.

DAY 8 HATTON - UDAWALAWA (B,L,D)

The ride today only 58km, along tea estate tracks, through the heart of Sri Lanka's tea growing region. After lunch at a local restaurant, we pack our bikes and transfer to our hotel on the edge of Udawalawe National Park, set on the banks of a lake.

DAY 9 UDAWALAWE LOOP (B,L,D)

Riding from the hotel to Udawalawe National Park, one of the best parks to see wild elephants in Sri Lanka. We have lunch in a nearby eco lodge. After 52km, ride back to our hotel.

DAY 10 UDAWALAWA - MIRISSA (B,L,D)

81km challenge ride today from hotel back roads for some fantastic cross-country riding. We try to get to the beach by the early afternoon, leaving you free time to enjoy the beach or a nearby surf camp. We will dine at one of the many nearby restaurants in the evening.

DAY 11 GALLE LOOP (B,L,D)

Cycling 139km through open paddy fields and cinnamon estates, we arrive in Galle mid-morning. Check-in your hotel.

DAY 12 MIRISSA FREE DAY (B,L,D)

Today, enjoy your free day at leisure.

DAY 12 MIRISSA FREE DAY (B,L,D)

We transfer 1.5 hours to Colombo where we can drop you at the airport or to a hotel if you are extending your stay in Sri Lanka.



Total riding distance: 120 km
Average ride per day: 60km
Number of Hiking Days: 2



MONGOLIA

CYCLING & HIKING TOUR

Trip code : TWT_MNG-ZMS | Duration : 9 days

Explore this last unspoilt destination as you pedal, hike and horse ride through this steppe nation on a route combining diverse landscape and terrain. Enjoy unique experiences and be rewarded for your determination with a once-in-a-lifetime experience that is sure to leave a lasting memory. From stargazing nights in tented camps to luxury stay in a traditional ger, you will learn Mongolian traditions in a full nomadic experience.

This is a suggested itinerary only, and can be changed to suit each individual group. Tweet World Travel specialises in professionally designing and customising biking tours, ensuring your holiday is tailored to suit your every need.

Your Inclusions:

-  24/7 local assistance and travel guidance
-  Expert services of experienced cyclist local guides throughout your trip
-  All touring & transfers in air-conditioned vehicles
-  Support vehicle throughout the tour
-  Accommodation at 4-star hotel/ Tented Camp
-  Comprehensive sightseeing, Entrance fees and local government taxes
-  Light weight 24 to 27-speed gearing, mountain bikes & Biking equipment
-  8 breakfasts, 7 lunches, 8 dinners; Water and snack during the tour



Brief Itinerary

DAY 1 ARRIVE IN ULAANBAATAR (D)

On your arrival you will be transferred from the airport to your hotel. After a trip briefing and a tour around the capital. In the evening, we gather for a Mongolian dinner before resting for an early start the next day.

DAY 2 ULAANBAATAR - JANCHIVLAN - SHOHOI TSAGAAN (B,L,D)

Transfer out of the city and bicycle to a small pass (1,930 m) that is sure to get your blood pumping! We then take a swooping downhill across open steppe grassland to our tented camp by the Tuul River.

DAY 3 SHOHOI TSAGAAN - ZUUN BAYAN (B,L,D)

Another adventurous day. We pedal hard and climb high on rocky roads across rivers and past encampments of herders and their flocks. The reward is a swooping downhill back to our camp.

DAY 4 ZUUN BAYAN - SUTSADAV (B,L,D)

Switch mode and trek along the Sutsadav Ridge with splendid views. Then wind our way up to a high pass (1,900 m) on single trails made by wild animals and herders before camping by Mount Altan Olgii.

DAY 5 ALTAN OLGII MOUNTAIN (B,L,D)

On this seven-hour trekking adventure, we conquer the towering 2,656-m Mount Altan Olgii, abundant with wildlife, among rewarding views of an endless sea of mountains and forests.

DAY 6 ALTAN OLGII MOUNTAIN - TUUL RIVER (B,L,D)

We switch mode again, this time to a time-honoured local tradition and trek on Mongolian horses to the confluence of the Tuul and Terelj Rivers. Before spending our last night in a tented camp with a chance to sample horse milk and cheese during dinner.

DAY 7 TUUL RIVER - YOLT PASS (B,L,D)

We ride our horses downstream along the scenic Tuul River and continue beyond its confluence with the Terelj River before wading the latter. Once across the Terelj, we enter Terelj National Park, a spectacular bowl of wooded mountains and interesting-looking granite formations such as the "Turtle Rock" and the "Praying Lama Rock." For the night, we settle in a Mongolian camp that comprises of traditional felt-covered gers, or yurts.

DAY 8 YOLT PASS - ULAANBAATAR (B,L,D)

After breakfast, we transfer back to Ulaanbaatar. Then you are free to explore the capital or relax after the long journey. We gather again in the evening for a farewell dinner made complemented by a fascinating Mongolian folk concert.

DAY 9 ULAANBAATAR - DEPARTURE (B)

Spend more time exploring Mongolia or catch your onward flight. You will be transferred to the airport for your departure flight.





Total riding distance: 512 km
Average ride per day: 73 km
Average climbing per day: 687m



JAPAN

CYCLING TOUR

Trip code : TWT_JPN-JNP | Duration : 9 days

Join us on an unforgettable cycling holiday in Japan. Get ready to experience authentic and historic Japan, cycle the Japanese countryside, soak in hot springs and experience local delicacies. Embrace the stunning scenery as you cycle to the coastline of Noto Peninsula, discover the hidden gems at UNESCO World Heritage site of Shirakawa-go villages and historic towns along the way. Along the way, satisfy your tastebuds with delicious cuisine and be charmed by the amazing hospitality of the Japanese people.

This is a suggested itinerary only, and can be changed to suit each individual group. Tweet World Travel specialises in professionally designing and customising biking tours, ensuring your holiday is tailored to suit your every need.

Your Inclusions:

-  24/7 local assistance and travel guidance
-  Expert services of experienced cyclist local guides throughout your trip
-  All touring & transfers in air-conditioned vehicles
-  Support vehicle throughout the tour
-  Accommodation at 4-star hotel
-  Comprehensive sightseeing, Entrance fees and local government taxes
-  Light weight 24 to 27-speed gearing, mountain bikes & Biking equipment
-  12 breakfasts, 10 lunches, 11 dinners; Water and snack during the tour



Brief Itinerary

DAY 1 KANAZAWA ARRIVAL (D)

On arrival, you will be welcomed and transferred to the hotel. Enjoy a welcome dinner and trip briefing.

DAY 2 KANAZAWA CITY TOUR (B,L)

Today, we will enjoy a city tour around Kanazawa and visits its highlights including Geisha districts, Kenroku Gardens, Kanazawa Castle and Omachi fish market.

DAY 3 KANAZAWA - TOGI (B,L,D)

After a short transfer to the coast, we start cycling on a flat bike path and do a stretch along the beach as well. We have a short stop at the 2,000-year-old Keta Taisha Shrine and also check out Ganmon Cave, a natural arch in the sea. The last 20 kilometres of the ride will be undulating as we enter the Noto Peninsula. We finish and spend the night in Togi Town, where a hot spring awaits us at the hotel.

DAY 4 TOGI - WAJIMA (B,L,D)

We ride along the Sekinohana coast to Minazuki. As we head along the ocean towards the fishing port of Wajima, we'll take the time to cool off and take in the rugged coastline and strange but beautiful formations shaped by wind and waves.

Tonight, we stay at a traditional Japanese ryokan, where we sleep on futons and can bathe in a hot spring.

DAY 5 WAJIMA - NOTO (B,L,D)

Today, we ride around the tip of Noto and see the terraced rice fields of Senmaida and for those interested, make a quick stop at Old Tokukuni House, a former feudal lord's house. We pass Mitsuke Island before riding into Tsukumo Bay.

Today, we will stay at fantastic Japanese ryokan (inn) with hot springs inside caves and magnificent views of the bay.

DAY 6 WAKURA - TAKAOKA (B,L,D)

A day of scenic coastal rides turns inland to explore the well-preserved area with traditional structures dating back to the Meiji Era. Once we check into our hotel, it's worth going for a short walk to visit the National Treasure, Zuiryū-ji Temple, and Takaoka's Great Buddha.

DAY 7 TAKAOKA - SHIRAKAWAGO (B,L,D)

We follow a bike path along the Oyabe River to the base of the mountains and stop to check out Zuisen-ji Temple, one of the largest wooden structures left standing in Japan.

Next, we head into the mountains for a few good climbs.

After arriving, we can spend the afternoon exploring Shirakawago, a UNESCO World Heritage Site

DAY 8 SHIRAWAKAWAGO - TAKAYAMA (B,L,D)

It will be an early start for the last day of riding. The route today takes us beside an impressive dam before a nicely graded road takes us over two pleasant passes.

We spend the afternoon exploring Takayama's old city, where narrow lanes are lined with wooden buildings housing sake breweries and quaint boutiques.

DAY 9 TAKAYAMA DEPARTURE (B)

Today, enjoy your free time in the morning before check out of your hotel. You can take a train to Nagoya and transfer to bullet train for Kyoto or Tokyo.





Total riding distance: 190 km
Average ride per day: 48 km
Average climbing per day: 1242m



BHUTAN CYCLING TOUR

Trip code : TWT-BTN-BUH | Duration : 7 days

Explore the Himalayan nation of Bhutan, long isolated from the rest of the world on bike. Cycle through the Himalayan mountain passes and sweeping descents with magnificent views to visit ancient watchtowers, monasteries and museums. On this introductory 200km cycling tour, experience pristine nature, gorgeous vistas, peaceful farms, and unique Bhutanese tradition blessed with a rich historical and cultural heritage. Starting from Paro, we will ride around the capital Thimpu, climb to the top of Dochula Pass and explore the scenic Punakha Valley. Our tour ends with a special visit to the legendary Tiger's Nest Monastery.

This is a suggested itinerary only, and can be changed to suit each individual group. Tweet World Travel specialises in professionally designing and customising biking tours, ensuring your holiday is tailored to suit your every need.

Your Inclusions:



24/7 local assistance and travel guidance



Expert services of experienced cyclist local guides throughout your trip



All touring & transfers in air-conditioned vehicles



Support vehicle throughout the tour



Accommodation at 4-star hotel



Comprehensive sightseeing, Entrance fees and local government taxes



Light weight 24 to 27-speed gearing, mountain bikes & Biking equipment



6 breakfasts, 5 lunches, 6 dinners; Water and snack during the tour



Brief Itinerary

DAY 1 PARO ARRIVAL (D)

On your arrival in Paro, you will be welcomed and transferred to your hotel. In the afternoon, enjoy a half-day tour to visit the landmarks of Paro. We'll visit Paro Museum, which features local art, textiles, artifacts, and sculptures. We'll also visit one of the major Dzongs located in Paro.

In the evening, after the tour briefing, enjoy an authentic Bhutanese Welcome Dinner.

DAY 2 PARO - THIMPHU - DODINA LOOP (B,L,D)

In the morning, we will travel to Thimphu (approx 2 hrs), and then the rest of the morning will be spent visiting museums and the National Institute for Zorig Chusum (an arts and crafts school).

In the afternoon, we ride to Dodina through small villages, farmlands, and dense forests. The end of the road in Dodina features two monasteries set back high amongst the mountains. The return is a gradual downhill to Thimphu.

Enjoy your evening at leisure, or you can explore the town well known for its handicraft shops.

DAY 3 THIMPHU - PUNAKHA (B,L,D)

We will have a major hill challenge today. After 5 km warm up, we start climbing for the next 18 km to the pass at Dochula, famous for its spiritual energy and the 108 Chortens.

After lunch, as we descend down the pass, we move from oak, maple, and blue pine forests into rhododendron, hemlock, and fir vegetation, and along with many monasteries that come into view to make this a memorable downhill ride.

DAY 4 PUNAKHA - TASHITHANG LOOP (B,L,D)

Today is an enjoyable out and back ride with the first leg being a gradual climb to Tashithang. We pass through lush forests famous for their rhododendron trees, which, if they are in bloom, make for magnificent views.

DAY 5 PUNAKHA VALLEY (B,L,D)

Today, we take time to explore the beautiful and lush valley surrounding Punakha. We will visit Punakha Dzong, one of the most impressive Dzongs in Bhutan which was built in 1638 and is all the more remarkable as it was constructed without the use of drawings or a single nail!

In the afternoon, we visit Chimi Lhakhang. Built in 1499, it is also known as the temple of the "Devine Madman" (Lama Drukpa Kunley) and of the disciple of one of the five great tertons (treasure discoverer), Pema Lingpa. This temple is also noted for its blessing of women who wish to bear children.

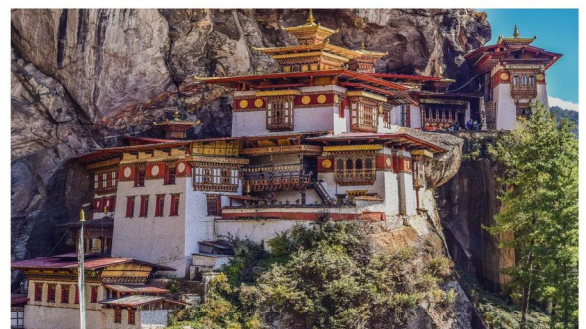
DAY 6 PUNAKHA - PARO (B,L,D)

We leave Punakha early for the drive back to Paro. It will take about 4-6 hours depending on road construction, and visit the must-see Tiger's Nest (Taktsang Monastery) en route.

In the evening, enjoy a farewell dinner.

DAY 7 DEPARTURE (B)

Today, our driver will transfer you to the airport for your departure flight home, or to your onward destinations.





Total riding distance: 790 km
Average ride per day: 57 km



VIETNAM CYCLING TOUR

Trip code : TWT-VNM-VSH | Duration : 17 days

Join us on a 17-day adventure in Vietnam bicycle touring from the bustling city of Ho Chi Minh City, otherwise known as Saigon, up to Hanoi. This epic southeast Asian bicycle tour showcases all aspects of Vietnam; from the poignant aspects of its war-torn history to its fragrant and unforgettable cuisine! Cycle through beautiful wetlands, backed by jagged peaks. Travel vast stretches of stunning beaches and sample the freshest seafood available, straight from ocean-to-table.

This is a suggested itinerary only, and can be changed to suit each individual group. Tweet World Travel specialises in professionally designing and customising biking tours, ensuring your holiday is tailored to suit your every need.

Your Inclusions:

-  24/7 local assistance and travel guidance
-  Expert services of experienced cyclist local guides throughout your trip
-  All touring & transfers in air-conditioned vehicles
-  Support vehicle throughout the tour
-  Accommodation at 4-star hotel
-  Comprehensive sightseeing, Entrance fees and local government taxes
-  Light weight 24 to 27-speed gearing, mountain bikes & Biking equipment
-  Full board meals; Water and snack during the tour



Brief Itinerary

DAY 1 SAIGON ARRIVAL (D)

On your arrival you will be welcomed and transferred to your hotel. After bike fitting you will have a welcome dinner and trip briefing at one of the best restaurants in town!

DAY 2 SAIGON - CU CHI TUNNELS - SAIGON (B,L)

Today transfer a short distance out of town and ride to the famous Cu Chi Tunnels. After witnessing the war's devastating consequences, we return to Saigon by bus just in time for a visit to the notorious War Remnants Museum.

DAY 3 SAIGON - DALAT (B,L,D)

Rise early to catch a plane for a short flight to Dalat, once a favorite summer retreat among the French. Upon arrival, we'll test our bikes and cycle along lovely country lanes and back roads in the shadow of Mount Langbian.

DAY 4 DALAT - NHA TRANG (B,L,D)

From the hotel we tackle some big hills, including a 2,000-m pass, as we ride through dramatic mountains towards the beach resort town of Nha Trang.

DAY 5 NHA TRANG REST DAY (B)

For a rest day off the bikes we offer a boat trip to coral islands for swimming and snorkeling.

DAY 6 NHA TRANG - TUY HOA (B,L,D)

From the hotel we tackle some big hills, including a 2,000-m pass, as we ride through dramatic mountains towards the beach resort town of Nha Trang.

DAY 7 TUY HOA - QUY NHON (B,L,D)

Riding along a remote road through a mix of tribal and Viet villages, we cover some gentle hills before reaching Quy Nhon.

DAY 8 QUY NHON - QUANG NGAI (B,L,D)

We follow the coastal road to Tra O lagoon past many fishing villages. After lunch we cruise along the coast to Highway One before transferring to Quang Ngai for the night.

DAY 9 QUANG NGAI - MY LAI - HOI AN (B,L,D)

We'll visit the Thien An pagoda on our way to see My Lai, the site of one of the worst massacres of the American/Vietnam War. Our cycle route loops to Ha Lam and we end our day in Hoi An.

DAY 10 HOI AN - MY SON - HOI AN (B,L)

We ride to visit My Son, the ancient centre of Cham civilization. Although many of the temples were destroyed during the Vietnam War, the existing sites are still sure to impress most visitors. We transfer by bus back to Hoi An.

DAY 11 HOI AN - HUE (B,L,D)

This is the toughest but also the most rewarding day of riding. We start with a climb up Hai Van Pass with breathtaking views of the coast. We then take a coastal side road all the way to Hue, the old capital of the Nguyen Dynasty.

DAY 12 HUE - NINH BINH (B,L,D)

After cruising on the Perfume River to Thien Mu Pagoda we get back on bicycle to visit Ming Mang Mausoleum. Then we transfer to the railway station for an overnight train to Ninh Binh.

DAY 13 NINH BINH - CUC PHUONG NATIONAL PARK (B,L,D)

We cycle from our hotel through spectacular karst scenery with limestone mountains soaring in the middle of rice paddies. At Cuc Phuong National Park we visit the primate rescue centre before checking into our accommodation.

DAY 14 CUC PHUONG NATIONAL PARK - HAI PHONG (B,L,D)

After exploring more of the park by bike we head east, riding some interesting back roads through many pineapple plantations. We then transfer to Haiphong, one of Vietnam's major ports.

DAY 15 HAI PHONG - CAT BA ISLAND (B,L,D)

After the morning transfer we catch a ferry to Fulong on Cat Ba Island. Once off the boat we roll 27 km on the island's only road and in the afternoon you are free to explore the area before spending the night on this heavenly island.

DAY 16 HALONG BAY - HANOI (B,L,D)

We have a short ride in the morning and head for a memorable cruise through majestic Halong Bay. Then we transfer to Hanoi and meet again in the evening for our farewell dinner.

DAY 17 DEPARTURE (B)



Total riding distance: 462 km
Average ride per day: 68 km
Average climbing per day: 1235m



CHINA/TIBET CYCLING TOUR

Trip code : TWT-CHN-CYD | Duration : 12 days

Vibrant and diverse are words that perfectly describe China's southern province of Yunnan. Graced with spectacular natural landscapes, multicultural inhabitants, and fresh mountain air, Yunnan is the perfect mix of great cycling and local flavor. Home to both famous landscapes and landmarks, like Shangri-La and Tiger Leaping Gorge, to lesser known sites like the karst terraces of Bai Shui Tai, Yunnan is both a stunning and fascinating exploration of China's treasures beyond the Great Wall!

This is a suggested itinerary only, and can be changed to suit each individual group. Tweet World Travel specialises in professionally designing and customising biking tours, ensuring your holiday is tailored to suit your every need.

Your Inclusions:

-  24/7 local assistance and travel guidance
-  Expert services of experienced cyclist local guides throughout your trip
-  All touring & transfers in air-conditioned vehicles
-  Support vehicle throughout the tour
-  Accommodation at 4-star hotel
-  Comprehensive sightseeing, Entrance fees and local government taxes
-  Light weight 24 to 27-speed gearing, mountain bikes & Biking equipment
-  Full board meals, Water and snack during the tour



Brief Itinerary

DAY 1 ARRIVE IN SHANGRI-LA (D)

We meet in Shangri-La, the capital of Dechen Tibetan Autonomous Prefecture. You will be met at the airport by a local tour guide for a group transfer and brought to the hotel for check-in

DAY 2 SHANGRI-LA LOOP (B,L,D)

After a bike fitting, we ride around scenic Napa Lake. After lunch, the rest of the day we are explore this Tibetan town.

DAY 3 SHANGRI-LA - BAI SHUI TAI (B,L,D)

We depart Shangri-La with a short morning transfer to start riding outside the town. We climb up and down through valleys and across mountains with spectacular scenery and arrive in Bai Shui Tai in late afternoon.

DAY 4 BAI SHUI TAI - TIGER LEAPING GORGE (B,L,D)

We have a few short climbs and rolling sections in the morning and are rewarded with views of Haba Mountain towering above a beautiful valley. Then we head down to the Naxi village of Haba for lunch and continue riding towards the Yangtze River Valley. When we reach Yonke village, we turn to Tiger Leaping Gorge and cycle through one of the deepest and most dramatic gorges in the world.

DAY 5 TIGER LEAPING GORGE REST DAY (B,L,D)

A rest day to explore the the famous Tiger Leaping Gorge of the Yangtze River. Cycle or hike, or do both!

DAY 6 TIGER LEAPING GORGE - LIJIANG (B,L,D)

We have an easy 12 km cycle back through the gorge again towards the Yangtze ferry where we will cross the river and then start a 30 km steady climb of 1,500 metres! Some undulating hills with long downhills takes us to Blue Moon Valley. We stop here and transfer to Lijiang.

DAY 7 LIJIANG - SHAXI (B,L,D)

We take morning transfer into the heart of rural Yunnan. We ride over a pass, descend to a valley, and ride along the 'Old Tibet 214 highway' to Shaxi where we overnight at a wonderfully local courtyard hotel.

DAY 8 SHAXI VILLAGE REST DAY (B,L,D)

We rest today in the interesting town of Shaxi. This old town nestled in a valley is a perfect place to explore the surrounding villages and countryside.

DAY 9 SHAXI - XIA SHAN KOU (B,L,D)

We start with another beautiful day of riding on the once very busy tea horse caravan route. We follow the Heihui River and pass through villages to Liantie Town. We end the day in Xia Shan Kou where we can soothe our sore muscles in the famous hot springs.

DAY 10 XIA SHAN KOU - DALI (B,L,D)

On our last riding day, we head to the historic town of Dali, cycling along a flat paved road between the towering Canshan Mountain range and Er Hai Lake.

DAY 11 DALI TO KUNMING (B,L,D)

We take a bus to Kunming and overnight there. After check-in we explore the city before a farewell meal together.

DAY 12 KUNMING DEPARTURE (B)





Total riding distance: 633 km
Average ride per day: 70 km
Average climbing per day: 948m



VIETNAM & LAOS CYCLING TOUR

Trip code : TWT-MCT-MHL | Duration : 13 days

This 13 day southeast asian bicycle tour explores the mountainous regions of two magical countries: Vietnam and Laos. Our adventure begins in Vietnam, a land of shimmering rice fields, lush jungles, and radiant beaches. Beginning in Hanoi, we spend our trip exploring the lesser known northwestern region of Vietnam, home to spectacular mountains and valleys. We ride amidst the crests of Indochina's highest peak, Mount Fansipan, and along the fascinating hill station of Sapa, a colonial retreat created by the French. Crossing into Laos, we cycle riverside where we venture into remote villages far from the tourist track.

This is a suggested itinerary only, and can be changed to suit each individual group. Tweet World Travel specialises in professionally designing and customising biking tours, ensuring your holiday is

Your Inclusions:

-  24/7 local assistance and travel guidance
-  Expert services of experienced cyclist local guides throughout your trip
-  All touring & transfers in air-conditioned vehicles
-  Support vehicle throughout the tour
-  Accommodation at 4-star hotel
-  Comprehensive sightseeing, Entrance fees and local government taxes
-  Light weight 24 to 27-speed gearing, mountain bikes & Biking equipment
-  Full board meals; Water and snack during the tour



Brief Itinerary

DAY 1 HANOI ARRIVAL (D)

We meet at airport transfer to hotel for a trip briefing and a welcome dinner.

DAY 2 HANOI - LAO CAI (B,L,D)

We take a city tour before catching the overnight train to Lao Cai, the start of our biking adventure.

DAY 3 LAO CAI TO SAPA (B,L, D)

Upon arriving in Lao Cai, we transfer to the hill station town of Sapa and check into our hotel. We then test out the bikes by riding on roads and trails used by the locals and ethnic tribes.

DAY 4 SAPA LOOP (B,L,D)

We ride to Ta Phin before doing a loop on a dirt track that traverses forested hillsides and passes many of Sapa's ethnic villages.

DAY 5 SAPA - TRAN TON PASS - TAM DUONG - LAI CHAU (B,L,D)

We climb to Tram Ton Pass - the highest road pass in Vietnam at 2,000 m. We ride past tea plantations and stop for short visits to tribal villages along the way to Tam Duong before finishing in Lai Chau.

DAY 6 LAI CHAU - MUONG LAY (B,L,D)

We take on a challenging uphill from Lai Chau before cruising downhill to Nam Na River. The climb continues as we cycle through mountains and hill tribe villages to Muong Lay to spend the night.

DAY 7 MUONG LAY - DIEN BIEN PHU (B,L,D)

We ride on rough roads and hills to Dien Bien Phu. Encounter many ethnic minorities on the way, so be sure to have your camera handy as they will welcome you in colourful, traditional clothes.

DAY 8 DIEN BIEN PHU LOOP (B,L,D)

Enjoy a leisurely, 50-km loop in the history-rich city of Dien Bien Phu and visit the war museum. After, we cycle out of town towards Muong Phang Commune on scenic roads before biking back to the hotel.

DAY 9 DIEN BIEN PHU - BORDER - MUANG KHOUA (B,L,D)

The trail twists and turns before reaching the Lao border. After a swap of crews, we cycle to the crossroads town of Muang Khoua on dirt roads through remote villages mainly comprised of Red or Black Thai ethnic tribes.

DAY 10 MUANG KHOUA - MUANG NGOY (B,L,D)

A rest day to lean back and relax. We boat down the Nam Ou River enjoying serene local life along the banks and stop at a remote village before reaching Muang Ngoy in the afternoon.

DAY 11 MUANG NGOY - NONG KIAU (B,L,D)

After a short boat trip, we ride primarily on dirt roads past ethnic villages in a region that few people ever visit. We overnight in Nong Kiau at a guesthouse that overlooks the river.

DAY 12 NONG KIAU - LUANG PRABANG (B,L,D)

Cycling an undulating road away from Nong Kiau we head west along the Nam Ou River to historic Luang Prabang, a UNESCO World Heritage Site, where we freshen up and gather for our farewell dinner.

DAY 13 LUANG PRABANG DEPARTURE (B)





Total riding distance: 795km
Average ride per day: 72 km
Average climbing per day: 600m



VIETNAM & CAMBODIA CYCLING TOUR

Trip code : TWT- MCT-MHS | Duration : 14 days

On this southeast asian bike tour from Vietnam to Cambodia you'll feel like a time traveler as you relive many periods of history from the 4th century ruins of My Son to the 10th century Khmer Empire, all the way to present day. Beginning in Hoi An and ending in Siem Reap, we explore the local culture of Vietnam and Cambodia while surrounded by unforgettable scenery, long coastal roads, and golden sunsets.

Riding along the Vietnamese coastline we enjoy a mix of eye opening history and unbelievable scenery. During this 14 day journey, we visit three UNESCO World Heritage sites, explore many ancient and colonial historical sites, and of course make plenty of time to sample local food and some of Vietnam's best coffee!

Your Inclusions:

-  24/7 local assistance and travel guidance
-  Expert services of experienced cyclist local guides throughout your trip
-  All touring & transfers in air-conditioned vehicles
-  Support vehicle throughout the tour
-  Accommodation at 4-star hotel
-  Comprehensive sightseeing, Entrance fees and local government taxes
-  Light weight 24 to 27-speed gearing, mountain bikes & Biking equipment
-  Full board meals, Water and snack during the tour



Brief Itinerary

DAY 1 DANANG ARRIVAL- HOI AN (D)

We meet at the airport then transfer to hotel for a trip briefing and welcome dinner.

DAY 2 HOI AN - MY SON - HOI AN (B,L)

We ride to see My Son, the ancient centre of the Cham civilization. Although many of the temples were destroyed during the war, there is still enough to impress most visitors.

DAY 3 HOI AN - MY LAI (B,L,D)

We start the morning with a pleasant ride from Hoi An to Tam Thanh where we eat lunch and spend time admiring the beautiful beach. We then transfer to the infamous My Lai, site of one of the worst massacres of the American/Vietnam War.

DAY 4 QUANG NGAI - KON TUM (B,L,D)

We leave the coast and head into the central highlands towards Quang Nam and on to Kon Tum. We have a pass to conquer today, Violak Pass (1300 m above sea level) but then are rewarded with a 20-km descent.

DAY 5 KON TUM - PLEIKU (B,L,D)

We cycle through Jarai and Bhanar villages and see communal houses with very steep and tall roofs. Next, we enter tea and coffee plantations before reaching Pleiku, home of the best coffee in Vietnam.

DAY 6 PLEIKU - CAMBODIA BORDER - BANLUNG (B,L,D)

After breakfast, we head to the border with Cambodia. Start riding to Banlung, one of the most far-flung of the Khmer provincial capitals and spend the night in rustic surroundings.

DAY 7 BANLUNG REST DAY (B,L,D)

Day of relaxation to enjoy a morning market or take a picnic lunch and explore the mysterious crater lake of Boneng Yeak Laom or just enjoy staying at the lodge where we meet up for dinner.

DAY 8 BANLUNG - STUNG TRENG (B,L,D)

Get back in the saddle to Stung Treng province along a rustic highway. Ride through rice paddies and stop to enjoy the simple pleasures of rural life as we cycle towards the setting sun. Tonight, experience delicious Khmer food paired with very personalised service at Tonle Tourism Training Centre.

DAY 9 STUNG TRENG - KRATIE (B,L,D)

We cycle through rural villages then board a boat at Kratie to enjoy an afternoon cruise on the Mekong River to see the endangered Irrawaddy dolphins. At night, enjoy views of the Mekong from the rooftop terrace of your hotel.

DAY 10 KRATIE - KAMPONG CHAM (B,L,D)

We take a ferry across the Mekong to Chhlong and ride past French colonial houses and Buddhist pagodas. Then cycle up to Wat Han Chey, an 8th century pre-Angkor temple, to enjoy a picnic lunch and stunning views of the Mekong.

DAY 11 KAMPONG CHAM - KAMPONG THOM (B,L,D)

We ride over dirt and tarmac roads along the Mekong to Kampong Thom, a picturesque town on the banks of the Stung Saen River, which hosts a magnificent Khmer temple site.

DAY 12 KAMPONG THOM - SIEM REAP (B,L,D)

We transfer to the ancient bridge at Kampong. Later, ride to Domdel village and transfer to Siem Reap to our overnight hotel.

DAY 13 SIEM REAP - ANGKOR - SIEM REAP (B, L, D)

We start our ride to the Angkor Wat complex to see the biggest religious Hindu edifice in the world. We also visit Tah Prohm, famous from the film "Tomb Raider". We continue to Angkor Thom and Bayon Temple, ending our day with a beautiful sunset in the Angkor Park.

DAY 14 DEPARTURE (B)

Today, our driver will transfer you to the airport for your departure flight home, or to your onward destinations.



Total riding distance: 1036 km
Average ride per day: 115 km
Average climbing per day: 885m



THAILAND & MALAYSIA CYCLING TOUR

Trip code : TWT_TWT-MCT-KKL | Duration : 15 days

Embark on a road cycling odyssey through the less-explored region of Southeast Asia. Conquer 1,000km in 9 cycling days, with variety in terrain and ride profiles through two countries in one trip: Thailand and Malaysia. Ride leisurely along the coast of South Thailand and challenge yourself with some substantial climbs in Malaysia. Be amazed with fantastic natural scenery, amazing food, excellent hospitality and friendliness along the way. This tour is perfect for recreational cyclists who are comfortable riding over 100kms on back to back days.

This is a suggested itinerary only, and can be changed to suit each individual group. Tweet World Travel specialises in professionally designing and customising biking tours, ensuring your holiday is tailored to suit your every need.

Your Inclusions:



24/7 local assistance and travel guidance



Expert services of experienced cyclist local guides throughout your trip



All touring & transfers in air-conditioned vehicles



Support vehicle throughout the tour



Accommodation at 4-star hotel



Comprehensive sightseeing, Entrance fees and local government taxes



Light weight 24 to 27-speed gearing, mountain bikes & Biking equipment



14 breakfasts, 10 lunches, 13 dinners; Water and snack during the tour



Domestic flight from Bangkok to Krabi



SEOUL KTV

Brief Itinerary

DAY 1 BANGKOK ARRIVAL (D)

We meet at the hotel for a trip briefing and a seafood dinner.

DAY 2 BANGKOK CITY TOUR (B,L)

Today enjoy a half day city tour. Then journey along the canals by long-tailed boat and experience shopping at floating local markets.

DAY 3 BANGKOK - FLY TO KRABI (B,D)

Today, take a short domestic flight from Bangkok to Krabi. On your arrival, we will have another briefing about the epic riding ahead of us! Get a first taste of the fresh local specialties with a seafood dinner.

DAY 4 KRABI - PAK MENG (B,L,D)

We start the day by riding through the mangroves and rubber plantations to avoid traffic. We continue cycling southwards, along the Andaman coast, directly to our hotel.

DAY 5 PAK MENG - KOH SUKORN (B,L,D)

We cycle on a scenic road alongside the sea before heading inland, where a soak in a hot spring is optional. Next, we cycle through thick mangrove forests and rubber and palm plantations before we cross to our overnight island resort on Sukorn Island.

DAY 6 KOH SUKORN - SATUN (B,L,D)

Head back inland and cycle scenic back roads and see rural Thailand at its best before riding south to the border city of Satun.

DAY 7 SATUN - ALOR SETAR (B,L,D)

Cycle across the border to Malaysia. We tackle a moderately challenging uphill ride followed by a thrilling downhill and overnight in Alor Setar.

DAY 8 ALOR SETAR - GEORGE TOWN (B,L,D)

Today's ride is mostly flat as we hug the scenic coast all the way to Tupah Recreational Forest, where we go for a refreshing dip in the river. We cross to the island of Penang and overnight at the colonial town of Georgetown. Tonight, we hit the town and discover the town's famous delicacies

DAY 9 GEORGE TOWN FREE DAY (B)

The day is off from riding to explore the streets to find the charm of Penang's cultural centre and UNESCO World Heritage Site, Georgetown!

DAY 10 GEORGE TOWN - IPOH (B,L,D)

Transfer by car from Georgetown to ride on undulating backroads to Ipoh.

DAY 11 IPOH - CAMERON HIGHLANDS (B,L,D)

The biggest ride of the trip, a long climb into Malaysia's central highlands.

DAY 12 CAMERON HIGHLANDS - RAUB (B,L,D)

Today's ride begins with a well-earned descent through Malaysia's tea country, followed by a long but mostly flat journey to the small town of Raub.

DAY 13 RAUB - KUALA LUMPUR (B,L,D)

Our last cycling day of the tour has a gradual climb through a scenic forest before ending in the charming town of Kuala Kubu Bharu. We'll enjoy a tasty Malaysian lunch before packing up the bikes and transferring by car to the city of Kuala Lumpur.

DAY 14 KUALA LUMPUR CITY TOUR (B,D)

Enjoy your free morning at leisure. In the afternoon, go on a tour of Kuala Lumpur to see the major landmarks and monuments of the Malaysian capital. Visit the Petronas Twin Towers, King's Palace, Independence Square, National Mosque and more. In the evening, enjoy a sumptuous farewell dinner.

DAY 15 DEPARTURE (B)

Today, our driver will transfer you to the airport for your departure flight home, or to your onward destinations.

GENERAL TERMS & CONDITIONS

DEFINITIONS

This Term & condition sets out how Tweet World Travel Pty. Ltd. (ACN 608 371 277) and its subsidiaries all their brands, including but not limited to Tweet World Travel, Tweet World Cruises, Worldwide River Cruises, Asia School Tours, Tweet World Tours; Asia Online Tours, Croisi Cruises (collectively referred to in this document as "Tweet World Travel", "we" "our" or "us") in these booking terms and conditions shall mean Tweet World Travel. These terms and conditions apply to bookings you make with our consultants (in-store, on our websites, over phone or by email); with your own travel agents, as well as online bookings you make on our websites. Please make sure your travel agent or our consultant advise you of our terms and conditions.

Please read the following terms and conditions carefully. You must not make any bookings unless you understand and agree with the following terms and conditions.

AGREEMENT BETWEEN USER AND TWEET WORLD TRAVEL

The services of Tweet World Travel are offered to you on the condition of your acceptance without modification of the terms, conditions, and notices contained herein. Your use of the Tweet World Travel constitutes your agreement to all such terms, conditions, and notices.

MODIFICATION OF THESE TERMS OF USE

Tweet World Travel reserves the right to change the terms, conditions, and notices under which the services of Tweet World Travel are offered, including but not limited to the charges associated with the use of the Tweet World, without notice.

BOOKING TERMS & CONDITIONS

1. BOOKING

Passenger names must be provided exactly as per passport at the time of booking. Any spelling corrections made after a deposit is paid must be sent in writing and will incur additional fees, including any ticket/voucher re-issue fees and any suppliers' re-issue fees.

After a booking is made, customers / travel agents need to send a scan copy of the travellers/passengers' passport together with a Passenger Information Form. If these required documents are not received within 3 working days, the respective booking will be void.

Tweet World Travel reserves the right to correct any errors in rates quoted/invoice or calculated, or any omissions made at any time during your booking. Any verbal quote given is an indication only of the final price and is subject to confirmation in writing. Even once payment has been paid in full but an error in price has been found, Tweet World Travel reserve the right to correct any error.

Tweet World Travel reserves the right to modify the price in case of exchange rate fluctuation while we provide a quote or make a booking for you. We continue to modify exchange rate even after your booking is made. The price is only guaranteed only when a booking is confirmed and a deposit is already paid.

Tweet World Travel's online websites, including but not limited to its online B2B Agent Portal and its websites listed below, show live availability of its tour and cruises, and the price is updated daily according to the exchange rate. The price is only guaranteed only when a booking is confirmed, and a deposit is already paid.

Tweet World Travel acts as a co-ordinator and books your holidays with one or several Third-party providers (Airlines, Cruise Company, Transfers, Third-Party Providers). Once booked with Tweet World Travel to utilise Third Party Provider' service, you also agree and are bound to their terms and conditions.

1.1 Deposit

Worldwide River Cruises

You will be required to pay deposit of 30% total price after booking is confirmed. Deposit due date is specified within your invoice / booking confirmation. If the deposit is not paid by the specified due date, your booking will be cancelled. If you cancel your cruise booking at any time, an amount of \$450 per person from your deposit is non-refundable, or depends on each package's terms & conditions. Any booking valued at or less than \$1,900 must be paid in full amount after booking is made. All airfares must be paid in full at the time of booking.

Asia Tours

You will be required to pay deposit after booking confirmation:

Private Tours or Group Tours is \$500 Per Person
Large Groups (more than 15 people) / School Tours is \$700 Per Person
Short packages, shore excursion, hotel etc. is \$250 Per Person
Deposit due date is specified within your invoice / booking confirmation. If the deposit is not paid by the specified due date, your booking will be cancelled.

If you cancel your booking at any time, your deposit is non-refundable, or depends on each package's terms & conditions

Any booking valued at or less than \$1,000 must be paid in full amount after booking confirmation. Some airfares or services must be paid in full at the time of booking.

Receipt of Deposit

By sending/paid a deposit the customers/ travel agents acknowledge that the terms and conditions are fully understood, and agree to be bound by the terms, conditions and responsibilities set forth.

he customers/travel agents also acknowledge and agree that:

All persons are fit and physically able to partake unaided in their chosen activities/packages/tours/cruise etc. as outlined in the itinerary.

All parties acknowledge the physical demands and hazards involved in the tour or cruise they will be undertaking and have chosen to participate at their own risk. It is your responsibility to notify us of any dietary requests/requirements. We will do our best to meet your request/requirements, however, cannot guarantee that it can always be accommodated.

All parties understand that any medical or dietary information provided to us does NOT, under any circumstances, make Tweet World Travel liable if a particular condition exacerbates while on tour or cruise which might affect their ability to participate in any portion of the tour or cruise

Our products DO NOT include Travel Insurance. We strongly recommend that you purchase travel insurance for your trip.

You need to provide us your Travel Insurance details upon booking, or at least before 30 days prior to your departure. If you do not have travel insurance prior to your departure, we retain the rights to refuse boarding/joining our tours or cruises. We might refund/provide travel credits for you, less any unrecoverable fees including but not limited to admin fees, visas fees, other suppliers' cancellation fees. We won't be held liable for any costs associated with this matter.

1.2 Final balance

Worldwide River Cruises

The final balance will be due 110 days before the departure date. If the outstanding payment is not received by the due date, your booking will automatically be cancelled. Then the cancellation rate will be applied. The cancellation terms are specified in your invoice/booking confirmation.

Asia Tours

Outstanding balance depends on the type of service you are undertaking:

For our tours/packages or other products, outstanding balance is due 65 days before departure. If the outstanding payment is not received by day 65, your booking will automatically be cancelled. The deposit is non-refundable.
For large group tours and school tours, outstanding balance is due 90 days before departure. If the outstanding payment is not received by day 90, your booking will automatically be cancelled. The deposit is non-refundable.

2. PAYMENT

All airfares must be paid in full at the time of booking confirmation
Deposit will due immediately or as specified in your invoice/booking confirmation
Final balance will be due before 65 days or 110 days before departure date, as specified in your invoice/booking confirmation
You can make a payment via Enett, Bank Transfer, Credit Card, Paypal

Credit Card Fee

The following Card Fees apply:

Visa Credit Card - 1.8% fee and MasterCard Credit Card - 1.76% fee applies.
American Express (Amex) - 2.8% fee applies.
Paypal - 2.6%

For late payment or urgent bookings, please notify us via email at payments@tweet-worldtravel.com.au

3. LATE OR URGENT BOOKING

Any booking made within 110 days before departure will require payment in full immediately when the booking is confirmed.

Bookings made less than 60 days prior to departure will incur a late booking fee of \$120 per person and must be paid along with the final payment at the time of booking.

4. AMENDMENTS FEES

After bookings are deposited, any amendment has to be requested in writing and incurs \$99 fee per person, plus any additional costs and administrative expenses incurred in arranging the alteration.

Alterations will be made at our discretion and may not always be possible.

5. SAFETY NET PROTECTION

5.1 Safety Net Protection

Safety Net Protection is not included in our tour/cruise packages. If you wish to purchase safety net protection, an additional fee of \$95 per person will occur. This is only valid for one-time use (claim).

Safety Net Protection enables passengers to amend their tour and/or river cruise 30 days prior to departure, to another tour/cruise on the same destination departing in the same year (once only) without incurring cancellation charges or penalties from Tweet World Travel. The new tour must be at the same cost or higher, but cannot be at lower cost than the initial tour booked. If the passengers choose the higher cost option, then the additional difference amount must be paid. However, no modifications shall be accepted less than 30 days prior to departure.

GENERAL TERMS & CONDITIONS

Safety Net Protection is payable immediately at the time of making deposit payment. Once purchased, Safety Net Protection is not refundable.

Safety Net Protection does not apply for airfares, or third-party fees and charges.

Safety Net Protection allows for amendment ONLY, not cancellation.

6. TRAVEL VOUCHER

Travel voucher will be issued and sent to customers/travel agents from 15 -30 days prior to departure. Make sure the travellers have obtained our travel voucher before travelling.

If the traveller travel without our provided travel voucher, they might be denied embarking/joining our services. It is your responsibility to contact us or your travel agents to obtain all necessary travel documents. If our services are booked by the travel agents, it is the travel agents' responsibility to collect travel vouchers and any necessary documents and provide that to the travellers.

Please make sure you read and understand the travel vouchers, and that the travel voucher matches your booking/your customers' booking. If there is any unbooked services / mistakes, you have to contact us or your travel agents immediately to rectify. Once the traveller already embark our cruise or join our tour at the destination, we are not liable for any unbooked services / mistakes.

It is the customers/travel agents' responsibility to make sure that the travellers have the valid visas and/or correct visa type to enter the destination country they are travelling to. Travellers might need to present the visas at multiple checkpoints and may be refused to fly out of their countries, if the visa documents cannot be presented. If such event occur, we won't be liable and the travellers will be deem as "no-show". The respective tour/cruise booking will be cancelled with the applicable cancellation charge.

Visa and other entry and exit conditions (such as currency, customs and quarantine regulations) change regularly. Contact the nearest Embassy or Consulate for up-to-date information.

CANCELLATION

Please check with your travel agents / our consultant before cancelling or amending a Travel Product. In certain circumstances, some Cruise Company, Airlines or Third-Party Travel Provider may charge cancellation fees up to 100% of the Travel Product's prices as per their terms and conditions.

Tweet World Travel acts as a co-ordinator and book your holidays with one or several Third-party providers, and you are subjected to their terms and conditions specified.

For a specific tour / cruise package, a separate cancellation policy might be set out and applied to your booking.

Please see the below for our general cancellation policy.

Cancellation by customer

Before the travel date the following fees will be apply:

Tours/ Packages	Large Group Tours & School Tours (More than 15 people)
65 days or more before departure – loss of deposit	90 days or more before departure – loss of deposit
64-40 days before departure – 55%	89-79 days before departure – 65%
39-31 days before departure – 75%	78-61 days before departure – 85%
Within 30 days of departure – 100%	Within 60 days of departure – 100%
Any 'no show' – 100%	Any 'no show' – 100%

After the trip has commenced, we are unable to refund any amount for unused services due to your unwillingness, early departure, late arrival, or missed days on tours.

If your tour/package includes international/domestic flights the airlines cancellation policies will be applied.

2.2 Cancellation by Tweet World Travel

For group set departure, if the minimum number of the group is not reached, we reserve the right to cancel or vary the tour 110 days prior to departure. If this event occurs, an alternative guaranteed travel date will be offered. Should these options not be acceptable by you, Tweet World Travel will offer travel credits to be used up to 24 months less visa cost, fuel surcharge and any other cancellation fees levied by airlines and other third parties.

If a booking is cancelled or varied prior to departure due to unforeseeable circumstances such as, but not restricted to, severe weather conditions or force majeure, Tweet World Travel will either change your travel arrangements as reasonably practicable to ensure your safety and invoice you for any additional costs. Tweet World Travel will offer credits to any unused part of your holiday package for future travel up to 24 months.

Force majeure events are beyond our control, including but not limited to war, civil disobedience, terrorism, insurrection, accident, explosion, sickness, epidemic, pandemic, fire, floods, severe weather, acts of God, acts of Government, alteration or cancellation of scheduled air services, accidents to or failure of machinery or equipment or industrial action.

During your tour, in the event of strike, bad weather, or force majeure conditions endangering the operation of the tour safely or extraordinary circumstances, Tweet World Travel may at all times and without notice, advance or delay a departure or a stopover or, if need be, change destinations, and may not be held responsible in the event of cancellation, earlier or later departure or arrival, modification or substitution. Tweet World Travel will offer credits to any unused part of your holiday package for future travel up to 24 months. Tweet World Travel will not be liable to any additional associated costs incurred to the travellers whatsoever.

Cancellation by Local Supplier or Third Party Travel Provider

Tweet World Travel acts as a coordinator and book your holiday with Third Party Travel Providers (Cruise company, airlines, local supplier, transfer service etc.) and is subjected to their particular terms and conditions.

If the Cruise Company, Airlines, Local Supplier or Third Party Travel Provider changes any part of your booking for reasons beyond its control, for example, if a Cruise Company or Third Party Travel Provider changes its schedules, overbooks, or if there are any changes in applicable surcharges, fees or taxes, we will use our reasonable endeavours to notify you.

If any such changes result in your Travel Product costing more or otherwise being materially different, then you may cancel the Travel Product. Depending on each particular suppliers' policies and terms & conditions, it may result in a monetary refund to you or travel credits to use in the future. The refund/credits will less any fees charged by us under our terms and conditions, and by the Cruise Company, airlines, local suppliers or Third party travel provider's terms and conditions that you agreed with.

Our fee may cost up to 10% of the total price that you have paid for your Travel Product to Cruise Company, Airlines, or Third Party Travel Provider.

Please check with your travel agents/ our consultant before cancelling or amending a Travel Product in these circumstances as some Cruise Company, Airlines, Local Suppliers or Third Party Travel Providers may charge cancellation fees up to 100% of the Travel Product's prices as per their terms and conditions.

RESPONSIBILITY

Tweet World Travel only acts as an agent for the Suppliers, and sell various travel related products as agent on behalf of, numerous transports, accommodation and other service providers, such as airlines, coach, rail and cruise line operators, as well as all other wholesalers.

Tweet World Travel acts as a co-ordinator for all persons taking these tours in the making of all arrangements for transportation, cruising, touring, sightseeing and hotel accommodation. Our obligation to you is to make travel bookings as your agent on your behalf and to arrange relevant contracts between you and travel service providers. All bookings are subject to the terms and conditions and limitations of liability imposed by each Supplier. It is important for you to obtain and read the applicable Supplier's terms and conditions as they may limit or exclude their liability to you.

Tweet World Travel does not own, manage, control or operate any transportation vehicle, any hotel or restaurant or any other supplier of services. All receipts, vouchers and tickets are issued subject to the terms and conditions specified by the Supplier and all services are subject to the laws of the country where the services are provided.

Tweet World Travel has no control over, or liability for, the services provided by third parties. We do not control the manner of the Suppliers. We disclaim and will be exempt from liability for anything to do with the supply of such Products.

All bookings are made on your behalf subject to the terms and conditions, including conditions of carriage and limitations of liability, imposed by these service providers. Your legal rights in connection with the provision of travel services are against the specific provider and, except to the extent a problem is caused by fault on our part, are not against us. Specifically, if for any reason any travel service provider is unable to provide the services for which you have contracted; your rights are against that provider and not against us.

LIABILITIES

Tweet World Travel (herewith called the Company) acts as a co-ordinator for all persons taking these tours in the making of all arrangements for transportation, cruising, touring, sightseeing and hotel accommodation. The Company does not own, manage, control or operate any transportation vehicle, any hotel or restaurant, any ship or any other supplier of services. All vouchers and tickets issued are subjected to the terms and conditions specified by the supplier and all services are subjected to the laws of the country where the services are provided.

GENERAL TERMS & CONDITIONS

LIABILITIES

Tweet World Travel (herewith called the Company) acts as a co-ordinator for all persons taking these tours in the making of all arrangements for transportation, cruising, touring, sightseeing and hotel accommodation. The Company does not own, manage, control or operate any transportation vehicle, any hotel or restaurant, any ship or any other supplier of services. All vouchers and tickets issued are subjected to the terms and conditions specified by the supplier and all services are subjected to the laws of the country where the services are provided.

Unforeseeable circumstances such as force majeure, adverse weather, flight rescheduling, hotel overbooking and faults with transportation or road conditions may also have an effect on the tour itinerary after the commencement date. Any decision made in respect of cruise/tour services by independent suppliers, cruise line operators or airlines to re-route or amend the itinerary due to any of the above or similar circumstances is at the discretion of the cruise/tour service provider. Tweet World Travel shall not be liable for any claim whatsoever arising from such events. We strongly urge all customers to undertake a high level of personal responsibility in order to ensure that possessions, equipment and personal documents are closely monitored and protected at all times. We also strongly advise all customers to purchase appropriate travel insurance to protect you from financial loss and personal injuries in the event of an emergency.

You acknowledge and agree that there are inherent risks involved in participating in the cruise/tour and other activities, including without limitation of possible contact with native flora/fauna, local residents, unforeseen events (force majeure) and travel in remote locations.

By making a booking, you agree to accept all risks associated with the cruise/tour and other activities. You agree to unconditionally release us from all liability, including without limitation in contract and in tort, for any cause or action, including any injury, damage, loss, cost, delay, additional expense or inconvenience caused directly or indirectly as a result of the inherent risks associated with the tour, or any force majeure events or other events which are beyond our control, including but not limited to war, civil disobedience, terrorism, insurrection, accident, explosion, sickness, epidemic, pandemic, fire, floods, severe weather, acts of God, acts of Government, alteration or cancellation of scheduled air services, accidents to or failure of machinery or equipment or industrial action.

If we or our service providers are affected in any way by a force majeure event, we may in our discretion vary or cancel any itinerary or arrangement in relation to the tour as we consider necessary, without incurring any liability to you.

Each service provider is responsible for the part of the cruise/tour and activities it conducts. Service providers are not our agents or employees and are not under our direct control. We therefore do not warrant the performance of any service provider. We do not accept, and you release us from, all liability for any injury, loss, damage, costs or expenses, including without limitation any property damage or personal injury, that you may suffer which arises out of any act or omission of a service provider or operator who provides services in connection with your tour. Any claim that you may have in relation to a service provider should be raised directly with that service provider.

You are responsible for any injury, loss, damage, costs or expenses arising through your own fault. You agree to indemnify us against all actions, proceedings, claims, demands, expenses and costs (including legal costs on a full indemnity basis and whether incurred by or awarded against us) as a result of, or arising in relation to, whether directly or indirectly, your participation in the tour or any act or omission by you in relation to the tour.

To the extent permitted by law, we do not accept any liability in contract, or otherwise for any injury, damage, loss (including consequential loss), delay, additional expenses or inconvenience caused directly or indirectly by the acts, omissions or default, whether negligent or otherwise, of third party providers over which we have no direct control. We do not accept any liability for any loss (including consequential loss or any associated costs) caused in case a third party provider becomes insolvent and goes out of business. Any payment already made to the third party provider in such case might be unrecoverable, and no refund will be made.

Under circumstances where our liability cannot be excluded and where liability may be lawfully limited, such liability is limited to the remedies required of us under applicable law (including the Australian Consumer Law). This liability clause is subject to your rights under the Australian Consumer Law and nothing in these terms and conditions is intended to limit any rights you may have under the Competition and Consumer Act 2010 (Cth).

AGENT RESPONSIBILITIES

It is the travel agents' responsibility to ensure that all invoice, itinerary details and documentation issued by Tweet World Travel are received and correct and that the customer is aware of amendment and cancellation conditions and other clauses in these Booking Terms & Conditions. Travel agents are also responsible to pass on Tweet World Travel's Terms & Conditions by the time clients make the booking.

After a booking is made, travel agents need to send a scan copy of the travellers/passengers' passport together with a Passenger Information Form. If these required documents are not received within 3 working days, the respective booking will be void.

Travel voucher will be issued and sent to travel agents from 15 -30 days prior to departure. Make sure the travellers have obtained our travel voucher before travelling.

If the traveller travels without our provided travel voucher, they might be denied embarking/joining our services. It is your responsibility to contact us or your travel agents to obtain all necessary travel documents. It is the travel agents' responsibility to collect our travel vouchers and any necessary documents and provide that to the travellers.

Please make sure you read and understand the travel vouchers, and that the travel voucher matches your booking/your customers' booking. If there are any unbooked services / mistakes, you have to contact us or your travel agents immediately to rectify. Once the traveller already embarks our cruise or join our tour at the destination, we are not liable for any unbooked services / mistakes.

It is the travel agents' responsibility to make sure that the travellers have the valid visas and/or correct visa type to enter the destination country they are travelling to. Travellers might need to present the visas at multiple checkpoints and may be refused to fly out of their countries, if the visa documents cannot be presented. If such event occurs, we won't be liable and the travellers will be deemed as "no-show". The respective tour/cruise booking will be cancelled with the applicable cancellation charge.

Visa and other entry and exit conditions (such as currency, customs and quarantine regulations) change regularly. Contact the nearest Embassy or Consulate for up-to-date information.

CLIENT RESPONSIBILITIES

If your domestic and international flights are not arranged by Tweet World Travel, it is your responsibility to advise us your departure and arrival time, or any changes or delays you might encounter.

If you do not notify us in a timely manner, your arranged Airport Transfer Service is not responsible for any missed pick up in those circumstances. If you arrive on a delayed flight and miss your allocated pick up, you will need to make alternative arrangements at your own expense.

If no notification is received from you or your agent, your arranged Airport Transfer Service will pick you up as scheduled and attempt to wait for your scheduled arrival up to 2 hours. If your delay is longer than this waiting period you will have to make alternative arrangements at your own expense.

If you book our services through a travel agent, make sure you collect your travel voucher and any other necessary documentations included (e.g. visa) 7 day prior to departure. You are responsible to check all details and documents are correct for your booking.

It is the customers' responsibility to ensure that all invoice, itinerary details and documentation issued by Tweet World Travel are received and correct and that the customer is aware of amendment and cancellation conditions and other clauses in these Booking Terms & Conditions. You acknowledge that you fully understand and agree to Tweet World Travel's Terms & Conditions by the time of booking.

After a booking is made, customers need to send a scanned copy of the travellers/passengers' passport together with a Passenger Information Form. If these required documents are not received within 3 working days, the respective booking will be void.

Travel voucher will be issued and sent to the customers from 15 -30 days prior to departure. Make sure all travellers have obtained our travel voucher before travelling.

If the traveller travels without our provided travel voucher, they might be denied embarking/joining our services. It is your responsibility to contact to obtain all necessary travel documents.

Please make sure you read and understand the travel vouchers, and that the travel voucher matches your booking. If there is any unbooked services / mistakes, you have to contact us or your travel agents immediately to rectify. Once the traveller already embarks our cruise or join our tour at the destination, we are not liable for any unbooked services / mistakes.

It is the customer's responsibility to make sure that the travellers have the valid visas and/or correct visa type to enter the destination country they are travelling to. Travellers might need to present the visas at multiple checkpoints and may be refused to fly out of their countries, if the visa documents cannot be presented. If such event occurs, we won't be liable and the travellers will be deemed as "no-show". The respective tour/cruise booking will be cancelled with the applicable cancellation charge.

Visa and other entry and exit conditions (such as currency, customs and quarantine regulations) change regularly. Contact the nearest Embassy or Consulate for up-to-date information.

PASSPORTS & VISAS

All travellers must have a valid passport for international travel and most countries require at least 6 months validity from the date of return and some countries require a machine-readable passport. When assisting with an international travel booking, we will assume that all travellers on the booking have a valid Australian passport. It is important that you ensure that you have valid passports, visas and re-entry permits which meet the requirements of immigration and other government authorities. It is your sole responsibility if any fines, penalties, payments or expenditures incurred as a result of such documents not satisfying the requirements of those authorities.

If your visas are included in our package and we act on your behalf to apply for the visas, all necessary documents relating to your visa application will have to be provided to us at least 30 days before your departure. If you fail to provide the necessary documents before 30 days prior to your departure, we will not be held liable for your visa application. And the visa fee included in our package is not refundable in any circumstances.

If you still require us to assist with visa application in less than 30 days before your departure date, an additional fee will be required for urgent visa processing.

GENERAL TERMS & CONDITIONS

It is the customer's/travel agent's responsibility to make sure that the travellers have the valid visas and/or correct visa type to enter the destination country they are travelling to. Travellers might need to present the visas at multiple checkpoints and may be refused to fly out of their countries, if the visa documents cannot be presented. If such event occurs, we won't be liable and the travellers will be deemed as "no-show". The respective tour/cruise booking will be cancelled with the applicable cancellation charge.

Visa and other entry and exit conditions (such as currency, customs and quarantine regulations) change regularly. Contact the nearest Embassy or Consulate for up-to-date information.

HEALTH

Please ensure that you are aware of any health requirements and recommended precautions relevant to your travel, and ensure that you carry all necessary vaccination documentation. In some cases, failure to present required vaccination documentation may deny your entry into a country. We recommend that you consult with your local doctor or health specialist before commencing your travel. General health advice for the destination you wish to visit is also available from the Department of Foreign Affairs and Trade.

The customers/travel agents also acknowledge and agree that:

All persons are fit and physically able to partake unaided in their chosen activities/packages/tours /cruise etc. as outlined in the itinerary.

All parties acknowledge the physical demands and hazards involved in the tour or cruise they will be undertaking and have chosen to participate at their own risk. It is your responsibility to notify us of any dietary requests/requirements. We will do our best to meet your request/requirements, however, cannot guarantee that it can always be accommodated.

All parties understand that any medical or dietary information provided to us does NOT, under any circumstances, make Tweet World Travel liable if a particular condition exacerbates while on tour or cruise which might affect their ability to participate in any portion of the tour or cruise.

Our products DO NOT include Travel Insurance. We strongly recommend that you purchase travel insurance for your trip.

You need to provide us your Travel Insurance details upon booking, or at least before 30 days prior to your departure. If you do not have travel insurance prior to your departure, we retain the rights to refuse boarding/joining our tours or cruises. We might refund / provide travel credits for you, less any unrecoverable fees including but not limited to admin fees, visas fees, other suppliers' cancellation fees. We won't be held liable for any costs associated with this matter.

TRAVEL INSURANCE

Our products DO NOT include Travel Insurance. Travel insurance is not included in our tours, cruises, day tours, private tours, group tours, transfers, and any of our packages.

For your protection, we strongly recommend that you purchase comprehensive travel insurance for your travel arrangements (without limitation) that include coverage for medical expenses, loss of luggage, cruise, land content and airfare charges that may occur. We are an authorised representative of CoverMore Travel Insurance Services.

We can provide you with general information about the travel insurance options available to you. If you decline travel insurance, you will be required to sign an indemnity statement/disclaimer.

You need to provide us your Travel Insurance details upon booking, or at least before 30 days prior to your departure. If you do not have travel insurance prior to your departure, we retain the rights to refuse boarding/joining our tours or cruises. We might refund / provide travel credits for you, less any unrecoverable fees including but not limited to admin fees, visas fees, other suppliers' cancellation fees. We won't be held liable for any costs associated with this matter.

TRAVEL DOCUMENTS

Travel documents include, but are not limited to, airline tickets, visas, hotel vouchers, tour vouchers or any other document used to confirm an arrangement with a service provider. Travel documents may be subject to certain conditions and/or restrictions including (without limitation) being non-refundable, no-date changeable and subject to cancellation and/or amendment fees.

Travel documents cannot be transferred to another person to use. All airline tickets must be issued in the name of the passport/photo identify holder. An incorrect name on a booking may result in an inability to use that booking and the booking being cancelled. Please review your travel documentation carefully and advise us immediately of any errors in names, dates or timings.

Travel voucher will be issued and sent to customers/travel agents from 15 -30 days prior to departure. Make sure the travellers have obtained our travel voucher before travelling.

If the travellers travel without our provided travel voucher, they might be denied embarking/joining our services. It is your responsibility to contact us or your travel agents to obtain all necessary travel documents. If our services are booked by the travel agents, it is the travel agents' responsibility to collect travel vouchers and any necessary documents and provide that to the travellers.

Please make sure you read and understand the travel vouchers, and that the travel voucher matches your booking/your customers' booking. If there is any unbooked services / mistakes, you have to contact us or your travel agents immediately to rectify. Once the traveller already embarks our cruise or join our tour at the destination, we are not liable for any unbooked services / mistakes.

It is the customers/travel agents' responsibility to make sure that the travellers have the valid visas and/or correct visa type to enter the destination country they are travelling to. Travellers might need to present the visas at multiple checkpoints and may be refused to fly out of their countries, if the visa documents cannot be presented. If such event occurs, we won't be liable and the travellers will be deemed as "no-show". The respective tour/cruise booking will be cancelled with the applicable cancellation charge.

PUBLICITY

When you book with Tweet World Travel, you agree that we may use images of you taken during the trip and any comments made in writing or in video by you regarding the trip, without recourse to you and without compensation to you, for publicity and promotion purposes only through whatever medium we choose.

If you do not want your images to be displayed, you have to advise us in writing at the time of booking, or when you collect your travel documents.

PRIVACY

Tweet World Travel collects information about you (including health information where necessary) to process your travel arrangements, facilitate your participation in loyalty programs and conduct marketing activities and market research. If the information is not provided, we may not be able to make travel arrangements for you. We may disclose your personal information to our related companies, carriers, travel service providers, organisations which provide services to you.

For our full Privacy Policy, see link: <https://b2b.tweetworldtravel.com.au/privacy-policy>

GOVERNING LAWS

If any dispute arises between you and Tweet World Travel, the laws of Australia will apply.



TWEET WORLD TRAVEL

INFORMATION

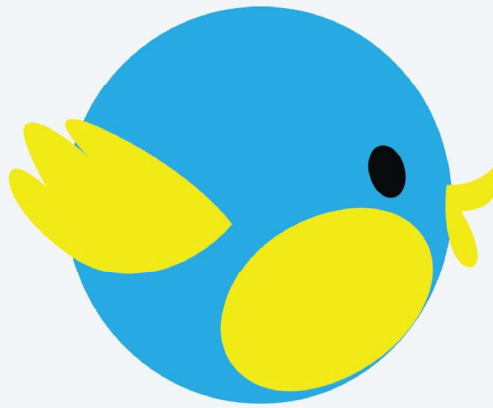
HEAD OFFICE

587 -591 Magill Road
Magill SA 5072
F: (08) 7226 1898

QUEENSLAND OFFICE

Level 9, 1 Corporate Court,
Bundall QLD 4217
F: (07) 5619 6841

WWW.TWEETWORLDTRAVEL.COM.AU



TWEET WORLD TRAVEL

For Enquiries and Reservation Call 1300 739 652

Or email us : contact@tweetworldtravel.com.au

Your Travel Agent



Tweet World Travel Pty-Ltd

ACN 608 371 277. ABN 71 608 371 277 . ATAS: A

